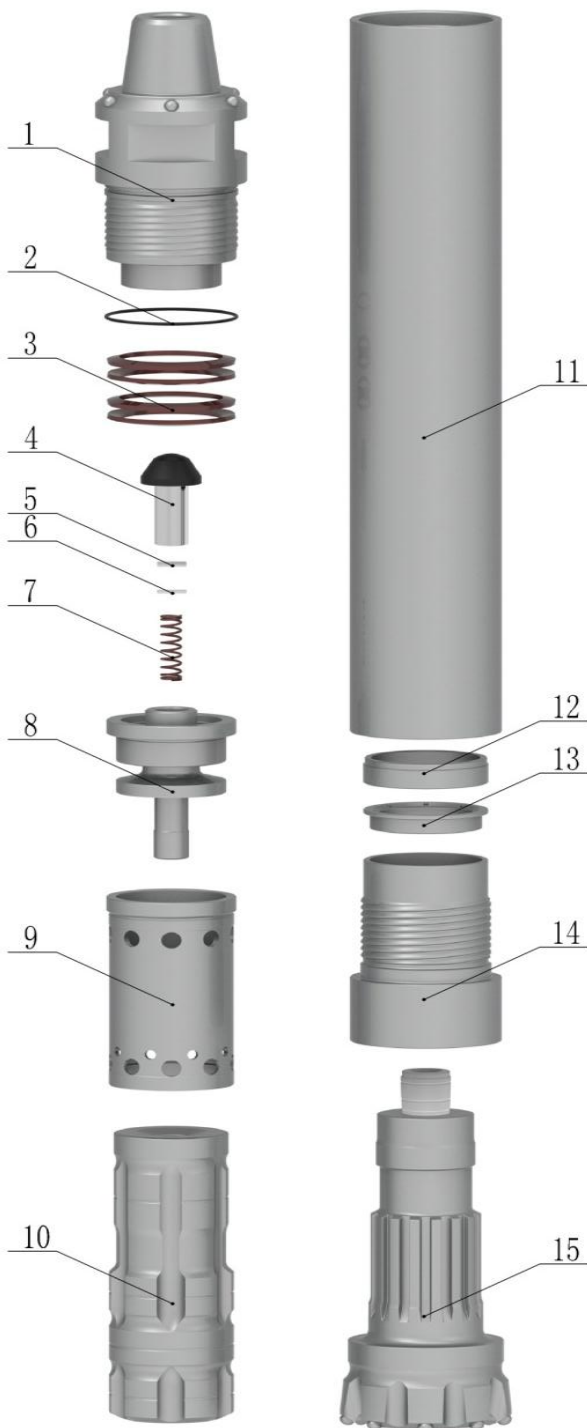


DTH Hammer. High Air Pressure With Foot Valve SQ85AMS

1. Top Sub Pin thread; 4 ½" API Reg
2. Overall length S/S, 1300mm (Without bit)
3. Weight 208 Kg
4. Diameter 194mm
5. Recommended hole size, 216mm – 254mm
6. Bit Shank type, QL80

Air consumption			
200 psi	650 cfm	1.37 MPa	18.4m ³ /min
250 psi	880 cfm	1.72 MPa	24.9m ³ /min
300 psi	1060 cfm	2.06 MPa	30.1m ³ /min
350 psi	1250 cfm	2.41 MPa	35.9m ³ /min



SQ85AMS DTH HAMMER

Item	Item Description	Part No.	Weight Kg
1	Top Sub	Q85A0101	52
2	O-Ring	F85B0201	0.01
3	Disc Spring	Q85B0801	0.33
4	Check Valve	Q85B0501	0.75
5	Nylon Choke	Q85B0601	0.01
6	Nylon Choke	Q85B0602	0.01
7	Spring	Q85A0701	0.06
8	Air Distributor	Q85A1101	8.23
9	Inner Cylinder	Q85B1301	5.47
10	Piston	Q85A1401	42
11	Piston Case	Q85A0301	92.8
12	Guide Sleeve	Q85A1701	2.3
13	Bit Retaining Ring	Q85B1902	0.94
14	Drive sub (Chuck)	Q85B2012	13
15	Bit	QL80	
16	Complete Hammer	SQ85AMS	208

Australasian Mining Services Pty Ltd

ABN 95 220 379 020

270 Berkshire Road Forrestfield WA 6056

Phone: (08) 9454 3444

www.austms.com

DTH Hammer, High Pressure with Foot Valve SQ85AMS

Specific recommendations for the SQ85AMS DTH Hammer

Lubrication; AMS Recommend the use of a Quality Rockdrill Oil, 320 grade

Rate/Hour	Lubrication as per air flow rate of consumption, 200ml/100cfm			
1300ml/hr	200 psi	650 cfm	1.37 MPa	18.4 M ³ /Min
1760ml/hr	250 psi	880 cfm	1.72 MPa	24.9 M ³ /Min
2120ml/hr	300 psi	1060 cfm	2.06 MPa	30.1 M ³ /Min
2500ml/hr	350 psi	1250 cfm	2.41 MPa	35.9 M ³ /Min

Refer to general recommendations for use of drilling fluid injection, water and or foam.

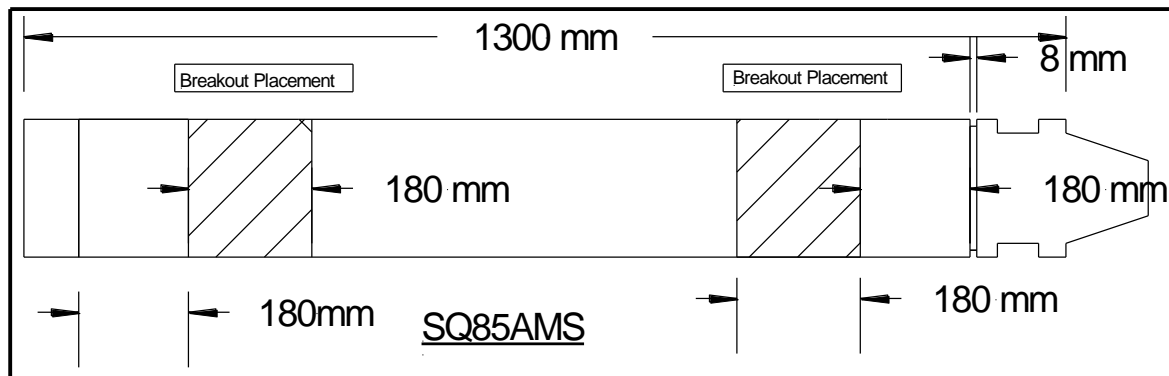
Increase rate of lubrication when using water and foam injection, avoid contamination of the lubrication system.

Use recommended quality tool joint grease for all threaded joints, top sub pin and drive sub male thread. AMS does not recommend grease for internal hammer lubrication.

Refer to MSDS information for use of all material additives, oil, grease, drilling fluids.

Breakout placement;

Recommended to use a wraparound type breakout tool on all DTH Hammers.



Make up; Standoff at top sub to cylinder joint, 6.0mm – 8.0mm

Cylinder OD wear limit; recommended minimum OD limit **178mm**

Handling; Weight without bit 208Kg. Not suitable for manual handling. Refer General operating guidelines for maintenance and handling for specific size hammers.

Operating parameters;

Working air pressure; Delivered rig air capacity. Maximum operating pressure achieved with delivered volume. Refer air consumption chart.

Down feed weight, (Weight on bit) sufficient weight to close the bit to hammer drop. As a guide, apply 1800 Kg – 2200 Kg for 8" size hammers operating at 350psi within the recommended bit size range, 216mm – 254mm. Adjust to conditions

Rotation speed. Adjusted to optimize penetration and carbide coverage in varying ground conditions. Suggested range 20-50 rpm. A guide of 2 rotations per 25mm of penetration should be considered when first setting rotation.

Rotation torque; adjusted to required minimum torque to maintain required rotation speed when weight on bit is fixed to maintain hammer operation. Suggested range varies with bit size and ground conditions. Torque values in the range of 1500 Ft/lb (207 KGM) – 2000 Ft/lb (277KGM) to be considered as a guide

Recommended PPE, for handling & maintenance;

- Safety glasses
- Gloves
- Steel cap footwear
- Appropriate work clothing, long sleeve shirt and full leg pants.
- Hearing protection & dust mask as operations require

Australasian Mining Services Pty Ltd

ABN 95 220 379 020

270 Berkshire Road Forrestfield WA 6056

Phone: (08) 9454 3444