

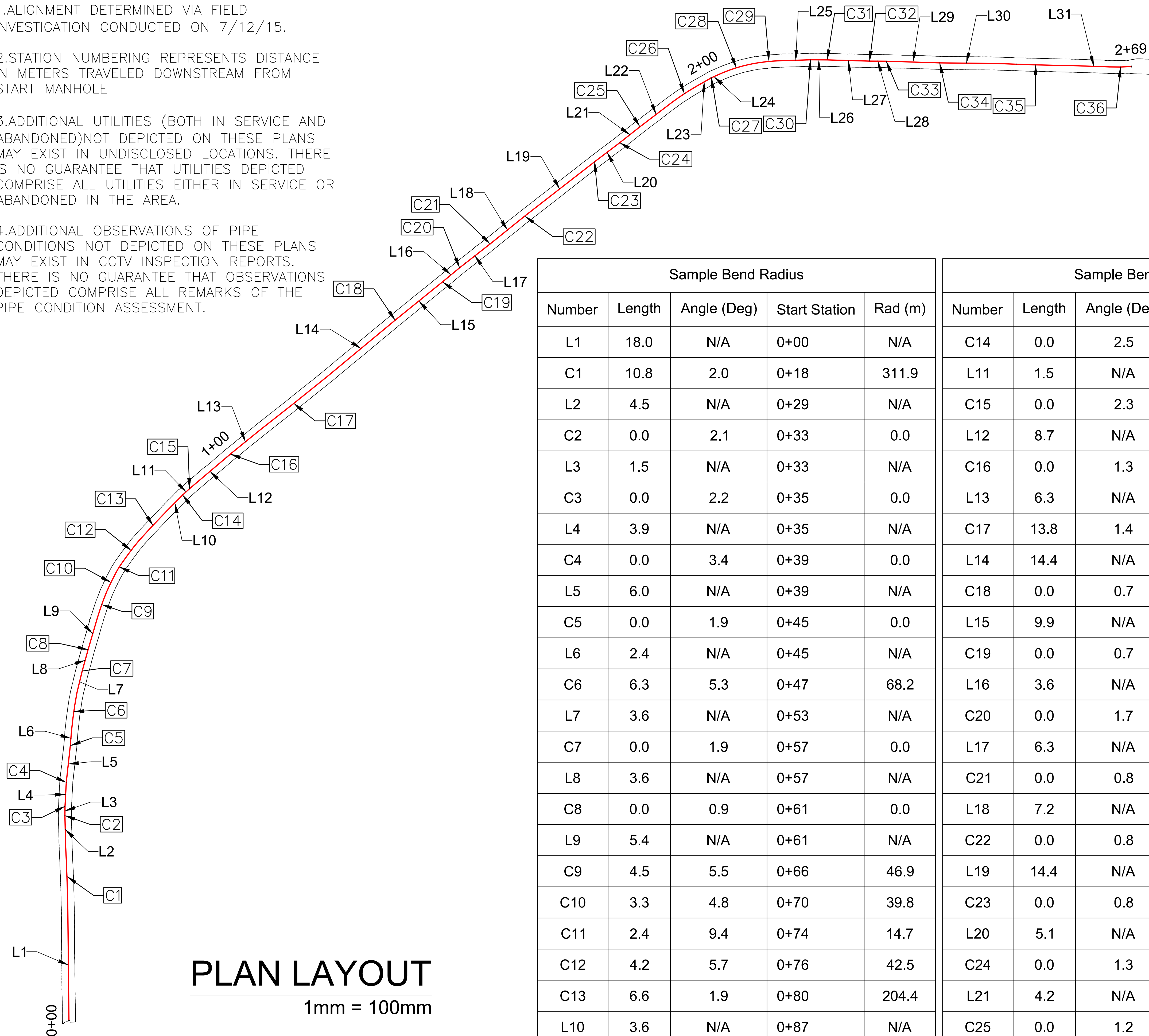
GENERAL NOTES:

1. ALIGNMENT DETERMINED VIA FIELD INVESTIGATION CONDUCTED ON 7/12/15.

2. STATION NUMBERING REPRESENTS DISTANCE IN METERS TRAVELED DOWNSTREAM FROM START MANHOLE

3. ADDITIONAL UTILITIES (BOTH IN SERVICE AND ABANDONED) NOT DEPICTED ON THESE PLANS MAY EXIST IN UNDISCLOSED LOCATIONS. THERE IS NO GUARANTEE THAT UTILITIES DEPICTED COMPRISE ALL UTILITIES EITHER IN SERVICE OR ABANDONED IN THE AREA.

4. ADDITIONAL OBSERVATIONS OF PIPE CONDITIONS NOT DEPICTED ON THESE PLANS MAY EXIST IN CCTV INSPECTION REPORTS. THERE IS NO GUARANTEE THAT OBSERVATIONS DEPICTED COMPRISE ALL REMARKS OF THE PIPE CONDITION ASSESSMENT.



PLAN LAYOUT

1mm = 100mm

Sample Bend Radius				
Number	Length	Angle (Deg)	Start Station	Rad (m)
L1	18.0	N/A	0+00	N/A
C1	10.8	2.0	0+18	311.9
L2	4.5	N/A	0+29	N/A
C2	0.0	2.1	0+33	0.0
L3	1.5	N/A	0+33	N/A
C3	0.0	2.2	0+35	0.0
L4	3.9	N/A	0+35	N/A
C4	0.0	3.4	0+39	0.0
L5	6.0	N/A	0+39	N/A
C5	0.0	1.9	0+45	0.0
L6	2.4	N/A	0+45	N/A
C6	6.3	5.3	0+47	68.2
L7	3.6	N/A	0+53	N/A
C7	0.0	1.9	0+57	0.0
L8	3.6	N/A	0+57	N/A
C8	0.0	0.9	0+61	0.0
L9	5.4	N/A	0+61	N/A
C9	4.5	5.5	0+66	46.9
C10	3.3	4.8	0+70	39.8
C11	2.4	9.4	0+74	14.7
C12	4.2	5.7	0+76	42.5
C13	6.6	1.9	0+80	204.4
L10	3.6	N/A	0+87	N/A

Sample Bend Radius				
Number	Length	Angle (Deg)	Start Station	Rad (m)
C14	0.0	2.5	0+91	0.0
L11	1.5	N/A	0+91	N/A
C15	0.0	2.3	0+92	0.0
L12	8.7	N/A	0+92	N/A
C16	0.0	1.3	1+01	0.0
L13	6.3	N/A	1+01	N/A
C17	13.8	1.4	1+07	563.7
L14	14.4	N/A	1+21	N/A
C18	0.0	0.7	1+35	0.0
L15	9.9	N/A	1+35	N/A
C19	0.0	0.7	1+45	0.0
L16	3.6	N/A	1+45	N/A
C20	0.0	1.7	1+49	0.0
L17	6.3	N/A	1+49	N/A
C21	0.0	0.8	1+55	0.0
L18	7.2	N/A	1+55	N/A
C22	0.0	0.8	1+62	0.0
L19	14.4	N/A	1+62	N/A
C23	0.0	0.8	1+77	0.0
L20	5.1	N/A	1+77	N/A
C24	0.0	1.3	1+82	0.0
L21	4.2	N/A	1+82	N/A
C25	0.0	1.2	1+86	0.0

Sample Bend Radius				
Number	Length	Angle (Deg)	Start Station	Rad (m)
L22	6.6	N/A	1+86	N/A
C26	4.8	6.3	1+93	43.4
L23	2.7	N/A	1+97	N/A
C27	0.0	4.6	2+00	0.0
L24	0.9	N/A	2+00	N/A
C28	6.9	15.9	2+01	25.0
C29	3.9	6.6	2+08	33.8
L25	4.8	N/A	2+12	N/A
C30	0.0	2.0	2+17	0.0
L26	2.7	N/A	2+17	N/A
C31	0.0	1.3	2+19	0.0
L27	6.9	N/A	2+19	N/A
C32	0.0	1.5	2+26	0.0
L28	2.7	N/A	2+26	N/A
C33	0.0	1.7	2+29	0.0
L29	8.7	N/A	2+29	N/A
C34	0.0	1.2	2+38	0.0
L30	8.7	N/A	2+38	N/A
C35	13.8	1.2	2+46	686.1
L31	5.1	N/A	2+60	N/A
C36	3.6	4.5	2+65	46.3

Sample START MH TO END MH				
SAMPLE				SAMPLE
BEND RADIUS REPORT				
DATE	SCALE	DESIGNED BY	FILE No.	DRAWING No.
10/15/2015	1mm=100mm	AMT	SAMPLE	1 of 4