

Community Action Partnership

Disaster Relief Assistance Program

Funder's Report - November 2017



THANK YOU to all of our generous funders helping our most vulnerable residents remain in Sonoma County after the devastating wildfires. We are excited to share the status and successes with you.

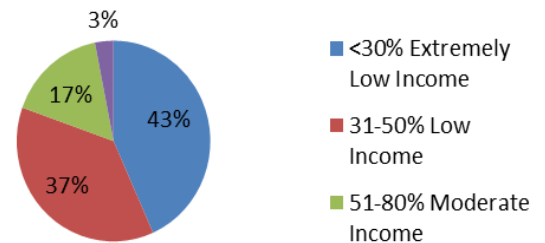
Sincerely, *Kathy Kane, Program Director*

Disbursed Funds as of 11/30/17



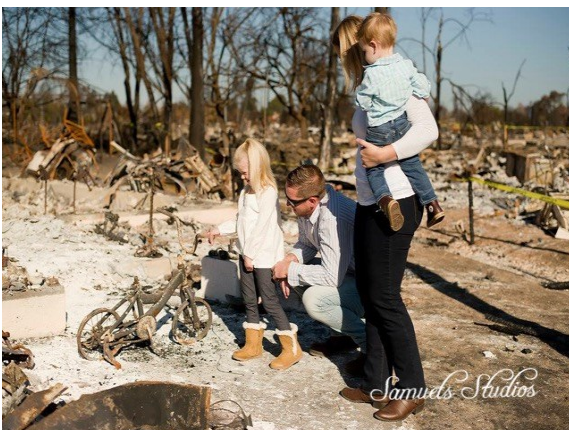
Participant Income Levels

Based on the Federal Poverty Level (FPL) for low to moderate income populations*



Ex: Family of 4 income level at <30% of FPL is under \$1,996

Total Funds Disbursed To Date: **\$134,004** (20% of total funds)



Housing Assistance



Essential Needs

Program Highlights

- 500+ Applications
- 107 Households Assisted
- Funders (HCA Family; Redwood Credit Union; Community Foundation; King Ridge Foundation, Community First Credit Union, FHL Bank San Francisco)
- Operational Support Welcomed!